

Review

Open Access

Mechanism of action of lenalidomide in hematological malignancies

Venumadhav Kotla^{†1}, Swati Goel^{†1}, Sangeeta Nischal¹, Christoph Heuck¹, Kumar Vivek², Bhaskar Das³ and Amit Verma^{*1}

Address: ¹Department of Medicine, Albert Einstein College of Medicine, Bronx, USA, ²Harrison Department of Surgical Research, University of Pennsylvania, Philadelphia, USA and ³Developmental and Molecular Biology, Albert Einstein College of Medicine, Bronx, USA

Email: Venumadhav Kotla - venumadhav_kotla@yahoo.com; Swati Goel - drswatigoel@gmail.com; Sangeeta Nischal - snischal@aecom.yu.edu; Christoph Heuck - cheuck@montefiore.org; Kumar Vivek - Kumar.Vivek@uphs.upenn.edu; Bhaskar Das - bdas@aecom.yu.edu; Amit Verma* - averma@aecom.yu.edu

* Corresponding author †Equal contributors

Published: 12 August 2009

Received: 24 March 2009

Journal of Hematology & Oncology 2009, **2**:36 doi:10.1186/1756-8722-2-36

Accepted: 12 August 2009

This article is available from: <http://www.jhonline.org/content/2/1/36>

© 2009 Kotla et al; licensee BioMed Central Ltd.

This is an Open Access article distributed under the terms of the Creative Commons Attribution License (<http://creativecommons.org/licenses/by/2.0>), which permits unrestricted use, distribution, and reproduction in any medium, provided the original work is properly cited.

Abstract

Immunomodulatory drugs lenalidomide and pomalidomide are synthetic compounds derived by modifying the chemical structure of thalidomide to improve its potency and reduce its side effects. Lenalidomide is a 4-amino-glutamyl analogue of thalidomide that lacks the neurologic side effects of sedation and neuropathy and has emerged as a drug with activity against various hematological and solid malignancies. It is approved by FDA for clinical use in myelodysplastic syndromes with deletion of chromosome 5q and multiple myeloma. Lenalidomide has been shown to be an immunomodulator, affecting both cellular and humoral limbs of the immune system. It has also been shown to have anti-angiogenic properties. Newer studies demonstrate its effects on signal transduction that can partly explain its selective efficacy in subsets of MDS. Even though the exact molecular targets of lenalidomide are not well known, its activity across a spectrum of neoplastic conditions highlights the possibility of multiple target sites of action.

Thalidomide is the first immunomodulatory drug with multiple effects on the immune system

Immunomodulatory drugs (IMiDs) CC-5013 (Revlimid™, Lenalidomide) and CC-4047 (Actimid™, Pomalidomide) are a series of synthetic compounds derived using structural modifications of the chemical structure of thalidomide. Thalidomide (α-(N-phthalimido) glutaramide) was synthesized in Germany, in 1954, from glutamic acid, to be used as a sedative and hypnotic anti-emetic drug, indicated to treat morning sickness in the first trimester of gestation. Thalidomide was banned in the 1960s because of the reports of congenital malformations like phocomelia associated with its use in pregnant women. One of the possible hypothesis to explain this teratogenicity is that

thalidomide creates oxidative stress by with subsequent downregulation of Wnt and Akt survival pathways which induces apoptosis during early embryonic limb development resulting in limb truncations[1]. Following an observation in 1965 that thalidomide administration improved the inflammatory lesions of erythema nodosum leprosum (ENL) in a patient suffering from sleep difficulty, the use of thalidomide continued. Eventually in 1998, FDA approved the drug for the treatment of ENL, with tight restrictions on its marketing. ENL is an immune complex mediated inflammatory reaction that occurs during therapy in lepromatous leprosy patients. It is commonly associated with systemic symptoms, and constitutes a medical emergency with urgent need of therapy with anti-inflammatory/immunomodulatory drugs

to prevent long term disabilities. Research into the mechanism of action of thalidomide unraveled an immunological and immunomodulatory basis for the effect, notably inhibition of denovo IgM antibody synthesis[2] by possibly affecting the macrophages, B-cells, helper or suppressor lymphocytes, decreasing TNF- α synthesis and modulating the T cell subsets by increasing the T-helper population after therapy[3]. TNF- α is a potent pro inflammatory cytokine, and is also involved in the pathogenesis of neural damage in leprosy. The inhibitory effect of thalidomide on TNF- α is a consequence of increased degradation of its mRNA due to the drug [4]. Thalidomide also regulates the levels of IL-6 and IFN- γ in ENL patients, further contributing to the immunomodulatory mechanism of action. Interest in thalidomide as a neoplastic agent intensified after the demonstration of antiangiogenic activity in animal models. The recognition that angiogenesis plays an important pathogenic role in multiple myeloma as reflected by increased bone marrow microvascular density and VEGF (vascular endothelial growth factor) levels, prompted the clinical use of thalidomide in relapsed/refractory multiple myeloma. With the recognition of adverse effects like neuropathy, deep vein thrombosis, and sedation, more potent and safer analogues were developed by Celgene. Lenalidomide is one such analogue which has been extensively tested and proven to be more potent than thalidomide and has fewer adverse effects compared to thalidomide. Another newer thalidomide analogue is pomalidomide. Figure 1 consists of the chemical structures and names of these three compounds and Table 1 illustrates the differences amongst them.

Mechanism of action of Lenalidomide

The clinical evidence for therapeutic potential of lenalidomide in various malignant conditions is consistent with the multitude of pharmacodynamic effects that have been shown in vitro and in animal models. Studies have shown that lenalidomide may work through various mechanisms in different hematologic malignancies. These mechanism involved direct cytotoxicity as well as through indirect effects on tumor immunity. Thus the differential efficacy noted with lenalidomide therapy among various disease states can possibly be explained individual's immune status and disease specific pathophysiology. Following are the different mechanisms explained by which lenalidomide acts in the body.

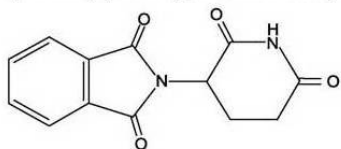
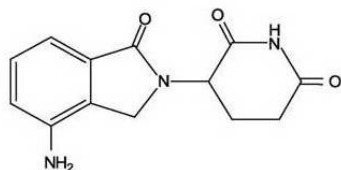
Immunomodulation

The immune system is comprised of cellular (macrophages, dendritic cells, NK cells, T cells and B cells), and humoral components (antibodies, cytokines). The immune system can prevent development of cancers by eliminating or suppressing oncogenic viral infections, altering the inflammatory milieu conducive to tumor genesis, and by immune surveillance by identifying and destroying transformed cells before they can cause harm[5].

Lenalidomide has been shown to modulate different components of the immune system by altering cytokine production, regulating T cell co stimulation and augmenting the NK cell cytotoxicity. Immunomodulatory properties of Lenalidomide are implicated in its clinical efficacy in multiple myeloma, CLL and myelodysplastic syndromes; where the disease pathogenesis involves in part a deregulated immune system in the form of altered cytokine networks in tumor microenvironment, defective

Table 1: Differences between thalidomide, lenalidomide and pomalidomide

Name	Thalidomide	Lenalidomide	Pomalidomide
Empirical Formula	C ₁₃ H ₁₀ N ₂ O ₄	C ₁₃ H ₁₃ N ₃ O ₃	C ₁₃ H ₁₁ N ₃ O ₄
Molecular weight	258.2	259.3	273.2
Chemical Structural	Thalidomide has two oxo groups in Phthaloyl ring	Lenalidomide has amino group at 4th position and single oxo group in Phthaloyl ring	Pomalidomide has amino group at 4th position and two oxo groups in Phthaloyl ring
Effects on T-cell proliferation	Thalidomide stimulates T cell proliferation and increases IFN- γ and IL-2 production	Lenalidomide is 100–1000 times more potent in stimulating T cell proliferation and IFN- γ and IL-2 production than thalidomide	Pomalidomide is similar to lenalidomide, in addition, it also enhances transcription factor T-bet, which reverts Th2 cells into Th1 like effector cells in vitro
Adverse Effects	Thalidomide has higher incidence of side effects like sedation, neuropathy and constipation.	Lenalidomide has lower incidence of adverse effects namely sedation, constipation and neuropathy than thalidomide.	Pomalidomide has lower incidence of adverse effects like sedation, constipation and neuropathy than thalidomide.
Teratogenicity	Thalidomide is a known teratogen.	Lenalidomide is not teratogenic in rabbit models	Pomalidomide is a known teratogen.

Thalidomide: 2-(2,6-dioxopiperidin-3-yl)-1*H*-isoindole-1,3(2*H*)-dioneLenalidomide: 3-(4-amino-1-oxo-1,3-dihydro-2*H*-isoindol-2-yl) piperidine-2,6-dione

Pomalidomide: 4-Amino-2-(2,6-dioxopiperidin-3-yl) isoindole-1,3-dione

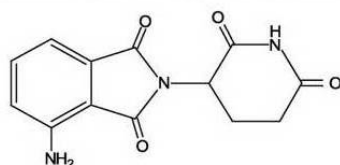


Figure 1
Chemical structures of thalidomide, lenalidomide and pomalidomide.

T cell regulation of host-tumor immune interactions, and diminished NK cell activity.

Altering cytokine production

Cytokines are soluble proteins secreted by hematopoietic and non hematopoietic cell types and are critical for both innate and adaptive immune responses. The expression of cytokines by cells may be altered in immunological, inflammatory, infectious and neoplastic disease states. Cytokines in turn exert their effects by influencing gene activation, growth, differentiation, functional cell surface molecule expression and cellular effector function. A coordinated cellular and humoral (cytokines, antibodies) interactions facilitate tumor destruction.

Lenalidomide has been shown to inhibit production of pro inflammatory cytokines TNF- α , IL-1, IL-6, IL-12 and elevate the production of anti-inflammatory cytokine IL-10 from human PBMCs[6]. The downregulation of TNF- α secretion is particularly striking and is up to 50,000 times more when compared to thalidomide[7]. TNF- α is a highly pleiotropic cytokine produced primarily by monocytes and macrophages and plays an important role in protective immune responses against bacterial and viral infections. Elevated TNF- α production is implicated in the pathogenesis of various hematologic malignancies and may be partly responsible for stem cell apoptosis and ineffective hematopoiesis seen in MDS [8]. TNF- α levels in

CLL patients are also elevated and exhibit a significant decrease as early as 7 days after lenalidomide treatment. These reductions correlate with cytoreduction suggesting a causal relationship with tumor growth [9].

Similarly, reduction in IL-6 and TNF- α levels could explain the action of lenalidomide in multiple myeloma. IL-6 inhibits the apoptosis of malignant myeloma cells and helps in their proliferation[10]. Lenalidomide down-regulates the production of IL-6 directly and also by inhibiting multiple myeloma (MM) cells and bone marrow stromal cells (BMSC) interaction [11,12], which augments the apoptosis of myeloma cells[13]. The precise mechanism of TNF- α downregulation by lenalidomide is not known, however thalidomide has been shown to increase the degradation of TNF- α mRNA [4,14]. It is possible that lenalidomide may work through similar mechanisms.

T cell activation

T cells are important effectors of immune response and their activation is tightly regulated to prevent auto reactivity. T cell activation involves the presentation of the peptide fragments displayed by antigen presenting cells (APCs) to the T cell receptor (TCR) and it is this interaction that gives specificity to the response. However this interaction alone is not sufficient if a T cell has to generate an effective response against the antigen. A secondary interaction of B7 molecule on APC and CD28 on the T cell surface provides the co stimulatory signal that augments the T cell response and aids in T cell proliferation, differentiation, and survival followed by a cascade of cytokine and cellular responses[15].(Figure 2). IMiDs, including lenalidomide act on T cells via B7-CD28 co stimulatory pathway. Blockade of this interaction using the CTLA-4-Ig, B7 blocking antibody, is partially overcome by IMiDs. IMiDs do not up regulate expression of CD28 and B7 on T cells and APCs respectively but they can directly induce tyrosine phosphorylation of CD28 on T cells leading to activation of downstream targets such as PI3K, GRB-2-OS, and NF- κ b. This might explain their ability to partially overcome CTLA4 Ig blockade[16]. T cell co-stimulation by lenalidomide leads to an increased Th1 type cytokine response resulting in increased secretion of IFN- γ and IL-2 that in turn stimulate clonal T cell proliferation and NK cell activity[6,17].

IMiDs have been shown to stimulate both cytotoxic CD8+ as well as helper CD4+ cells[18]. Their effects on T helper cells can potentially mediate Th1 type antitumor immunity in response to tumor cell vaccination in animal models[17]. The IMiD, CC-4047 (pomalidomide) enhanced partially protective antitumor effect of whole tumor cell vaccination in mice and generated long term immunity against subsequent live tumor challenge[17]. In vivo pro-

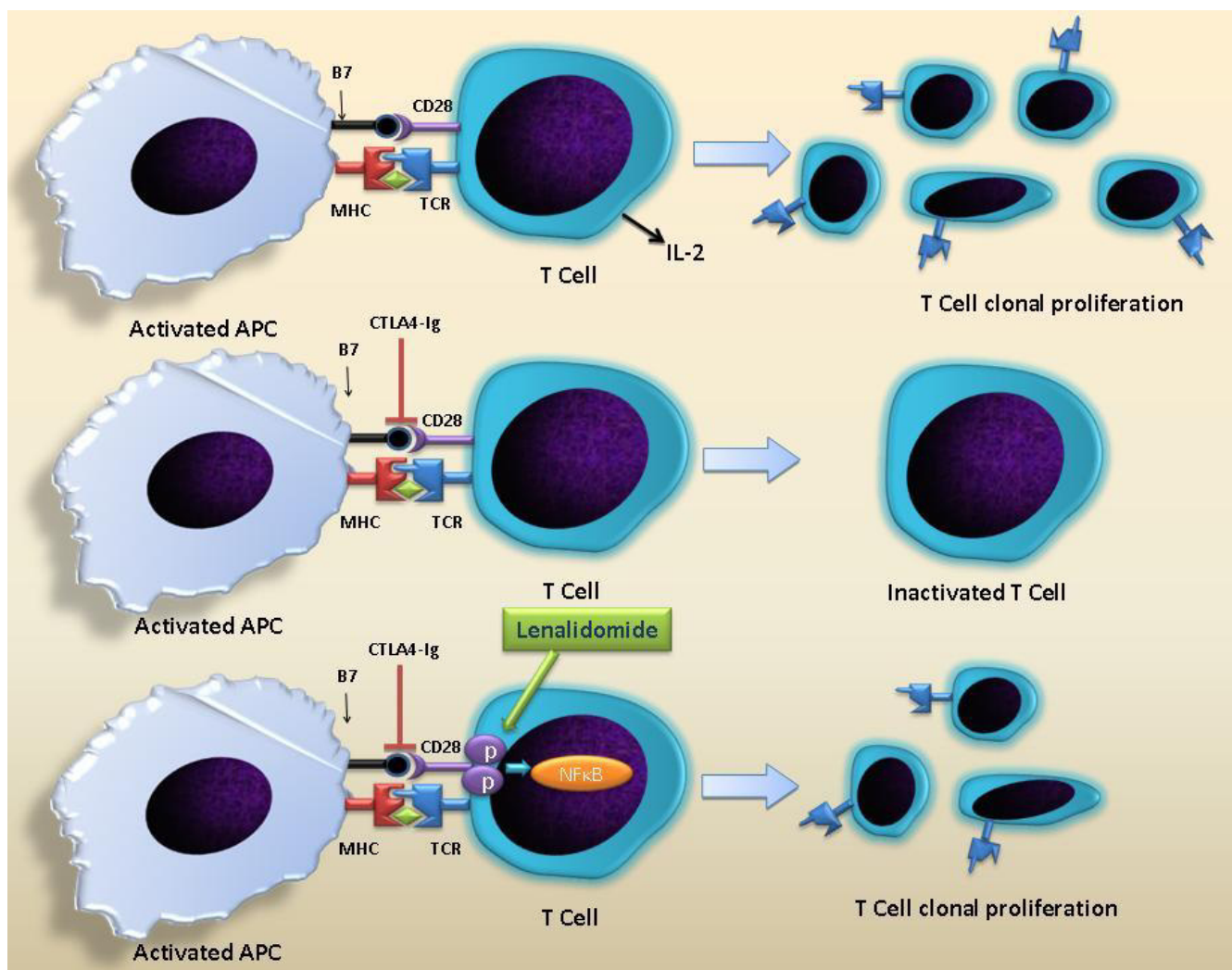


Figure 2
T cell activation. B7-CD28 co-stimulation pathway is needed for T cell activation and CTLA4 Ig blocks this pathway leading to T cell inactivation. Lenalidomide acts by directly inducing tyrosine phosphorylation of CD28 on T cells leading to activation of downstream targets such as PI3K, GRB-2-OS, and NF- κ B, thus partially overcoming CTLA4 Ig blockade and leading to T cell clonal proliferation.

duction of IFN- γ correlated with the tumor protection. When nude mice lacking T cells were exposed to IMiD and tumor cells during the priming phase, they did not demonstrate protection from the tumor, demonstrating that T cells are needed for tumor immunity. The IMiD drug itself was shown to have no direct anti tumor effect on growth inhibition or expression of co stimulatory molecules, ruling out direct cytotoxic effects. These effects can also partly explain the beneficial effects of lenalidomide in MDS. Clonal expansion of abnormal hematopoietic suppressive T cells are believed to have a pathogenic role in ineffective erythropoiesis of patients with MDS and 50% of the patients with MDS were shown to have clonal T cells com-

pared to 5% in age matched controls[19]. It is possible that lenalidomide may affect certain T cell subsets and result in hematologic improvements in MDS patients.

Augmentation of NK cell function

Natural Killer (NK) Cells comprise 2% of the circulating lymphocytes and are an important component of innate immunity. NK cells are not driven by specificity to antigens unlike T cells or B cells and are able to respond rapidly on contact with the target cell (cancer, viral infected) and kill the cell with antibody dependent cell mediated cytotoxicity(ADCC) and natural cytotoxicity. Natural killer cells also contribute to immunoregulation by secret-

ing cytokines like IFN- γ and TNF- α . Modulation of NK cell function is also believed to contribute to the anti tumor activity of Lenalidomide in MDS, MM and CLL.

Davies et al examined the potential immunomodulatory effects of thalidomide and its analogues in patients with multiple myeloma. The in vitro/in vivo role of NK cell cytotoxicity of MM cells in thalidomide treated patient was supported by the observation that the cell killing was not MHC restricted and CD56(NK cell) depletion in vitro inhibited killing of drug treated multiple myeloma cells[20]. Furthermore, treatment with Thalidomide was also accompanied by increased NK cell numbers and IL-2 levels. The precise mechanism whereby IMiDs increase the NK cell number or augment its cytotoxicity is not well known and it is possible that these effects may be indirect. Hayashi et al in their study of IMiDs in MM cell lines have demonstrated that when culturing PBMC with IMiDs leads to 1.2–1.3 fold increase in the percentage of CD56 cells. IMiDs enhanced ADCC when 51 Cr-labelled MM cells that express CD40 were incubated with rhuCD40 and then subsequently treated with PBMC cells incubated in the presence of IMiDs for 5 days. The increase in NK cell function may be related to the increase in IL-2 production by the T cells as the presence of a monoclonal Ab against IL-2 R blocked the NK cell cytotoxicity. IMiDs also were shown not to directly activate the NK cells, as evidenced by lack of phosphorylation of signaling molecules (ERK/p38MAPK/Akt/PKC) in NK cells[21].

Lenalidomide also enhanced the NK cell mediated ADCC in a series of functional in vitro studies using Rituximab coated NHL cell lines, Trastuzumab coated breast cancer cells expressing Her2 and cetuximab coated colon cancer cells positive for EGFR expression. The cell killing was increased in a dose dependent manner and presence of IL-2 was required to achieve cell killing[22]. In another study [23], IFN- γ production by NK cell in rituximab coated NHL cell lines pretreated with lenalidomide, was induced with the interaction of Ig G with FC- γ receptors in the presence of IL-2 or IL-12. Thus, lenalidomide enhanced Fc- γ receptor signaling may also play a role in increasing the potency of NK cells.

Anti-angiogenesis activity

The growth of the primary and metastatic tumors requires the development of new blood vessels, a process described as angiogenesis. Tumors possess the ability to promote the formation of new blood vessels from pre-existing host capillaries at a critical phase of the tumor development when the balance of pro- angiogenic and anti-angiogenic factors is altered. Vascular endothelial growth factor (VEGF) and its receptors are required for the formation of blood vessels during embryonic development, wound healing, and carcinogenesis. Tumors are

more dependent on the VEGF-Receptor signaling for growth and survival compared to normal endothelial cells [24]. Early studies showed that Thalidomide had anti angiogenic activity in a rabbit model of corneal neovascularization that was induced as a response to bFGF[25]. This report led to its use in Multiple Myeloma, where it demonstrated clinical benefit and was approved for use by the FDA. Thalidomide and the newer IMiDs have also been shown to significantly decrease the expression of angiogenic factors VEGF and Interleukin-6 (IL-6) in multiple myeloma; thereby reducing angiogenesis and hence contributing to clinical activity in multiple myeloma[26]. The newer IMiDs were found to be 2–3 times more potent compared to thalidomide in antiangiogenic activity in various vivo assays [27]. The antiangiogenic activity of both thalidomide and IMiDs has also been shown to be independent of immunomodulatory effects[28].

VEGF receptors are overexpressed on blast cells in dysplastic marrows in MDS patients [29]. Increased plasma levels of VEGF R have also been correlated with lower remission rate in patients with myelodysplastic syndromes. A recent study in 35 MDS patients with del 5 q showed a marked decrease in bone marrow vascularity subsequent to lenalidomide therapy. This reduction in vascularity correlated with clinical responses. However VEGF levels and VEGFR levels did not change significantly even though vascularization was decreased, supporting the notion that lenalidomide may uncouple angiogenesis from the effect of VEGF[30]. Apart from alteration in the levels of VEGF, analysis of signal transduction events show that lenalidomide partially inhibits Akt phosphorylation after VEGF stimulation in endothelial cells and also has inhibitory effects on phosphorylation of Gab1, a protein upstream of Akt [31,32]. These observations demonstrate that IMiDs may affect angiogenesis by multiple mechanisms.

Direct anti tumor activity

Lenalidomide treatment has also shown anti proliferative activity against MDS and MM cells in the absence of immune effector cells[33]. Malignant plasma cells derived from refractory cases of myeloma were shown to be susceptible to IMiD induced growth arrest. Lenalidomide has also been shown to inhibit proliferation in Burkitt's Lymphoma cell lines by causing dose dependant cell cycle arrest in G0-G1 phase[34]. Lenalidomide upregulated Cyclin dependant kinase (CDK) Inhibitor, p21 waf-1, a key cell cycle regulator that modulates the activity of CDKs. Similar reductions in CDK2 activity have been demonstrated in myeloma derived cell lines, U266 and LP-1[34]. In contrast, the normal B cells obtained from healthy donors were immune from growth inhibition and did not show any upregulation of p21 expression after 3 days of lenalidomide treatment. In other studies, thalidomide and its analogues have also been shown to induce

apoptosis in MM cell lines[35]. Effects on apoptosis in MM cells is secondary to increased potentiation of TNF related Apoptosis inducing ligand (TRAIL), inhibition of apoptosis protein-2, increased sensitivity to Fas mediated cell death, and up regulation of caspase-8 activation, down regulation of caspase-8 inhibitors (FLIP, cIAP2), down regulation of NF- κ B activity and inhibition of pro-survival effects of IGF-1[36]. The proapoptotic activity of IMiDs has also been demonstrated in CLL. Lenalidomide was shown to induce apoptosis and affect the Phosphatidylinositol pathway in CLL cells by decreasing activation of pro-survival kinases, erk1/2 and Akt2[37].

Interestingly, lenalidomide has shown opposite effects on the growth of normal progenitors. When cord derived CD34+ progenitors cells were cultured in expansion medium supplemented with lenalidomide, there was a dose dependent increase in the total number of CD34 cells after 6 days of culture [34]. p21 was upregulated in normal Cd34 cells, but did not affect the CDK2 activity in contrast to Nawalma cells (Burkitt's lymphoma cells).

While the transfusion independence seen with lenalidomide use in MDS can be explained by the normal progenitor expansion, the dose dependent cytopenias that are common with early treatment cycles of lenalidomide may be a result of inhibition of proliferation of abnormal clonal cell populations in the marrow.

Effects on multiple myeloma microenvironment

Lenalidomide exerts its distinct anti myeloma effects by altering the myeloma microenvironment. In multiple myeloma, osteoclasts lead to bone resorption and secrete survival factors for MM cells. The interaction between MM cells and BMSC in turn leads to increased production of IL-6 and other growth factors for MM cells and osteoclasts[38]. Lenalidomide directly decreases the formation of tartrate-resistant acid phosphatase (TRAP)- positive cells which form osteoclasts [11]. Additionally, it decreases α V β 3-integrin levels, an adhesion molecule needed for osteoclast activation and downregulates cathepsin K, a major cysteine protease expressed in osteoclasts, pertinent for matrix degradation in the resorption process[11]. It downregulates the important mediators of osteoclastogenesis such as transcription factor PU.1 and MAP kinase pERK and reduces the levels of bone remodeling factor -receptor activator of nuclear factor-kappaB ligand. Immunomodulators are also known to decrease the cell surface adhesion molecules such as ICAM-1, VCAM-1 and E-selectin [12] and inhibit the adhesion of MM cells to BMSC. Thus, lenalidomide interferes with the synergism amongst the osteoclasts, MM cells and BMSC and decreases osteoclastogenesis by acting at various levels.

Selective efficacy in cells with deletion of chromosome 5q

The del 5q syndrome is now recognized as a distinct pathologic subtype of MDS with markedly better clinical responses with lenalidomide treatment compared to non del 5q MDS patients. The exact mechanism of action of lenalidomide on del 5q clones is not known, but there appears to be several candidate genes (tumor suppressor) whose expression may be modulated by lenalidomide treatment. Hellstrom et al [39] studied the effect of lenalidomide on isolated differentiating erythroblasts from del 5q MDS patients and healthy controls. The addition of lenalidomide significantly inhibited the invitro proliferation of erythroblasts harboring del 5q while the proliferation of cells from normal controls and cells without 5q deletion was not affected. Gene expression profiling was performed at day 7 when a median of 97% cells in culture from MDS patients with del5q still possess del 5q, and thus any difference in gene expression deemed to be reflective of del 5q cells. There was altered gene expression in many genes, but a set of 4 genes was consistently upregulated (VSIG4, PPIC, TPBG and SPARC) by more than 2 fold in all samples. The upregulation of SPARC (Secreted Protein Acidic and Rich in Cysteine) after treatment with lenalidomide is particularly interesting given its location at 5q 31-32 and its role as a tumor suppressor with its anti-proliferative, anti adhesion, anti-angiogenic properties. The levels of activin -A increased 4 fold and analysis of global gene expression revealed significant deregulation of genes involved in extracellular matrix interactions, erythropoiesis relative to healthy control.

Another recent study compared gene expression profile of CD34 stem cells of 5q del MDS patients to healthy controls and MDS patients with normal karyotype using Affymetrix arrays. Approximately 40% of the probe sets showing reduced expression levels localized to the del 5q region. The commonly deleted region (CDR) region is thought to comprise of approximately 40 genes that are hypothesized to have a tumor suppressive role given the observation that deletion of the 5q region leads to clonal proliferation of myelodysplastic clone. Majority of the genes associated with CDR showed lower expression but several candidate genes (RBM22 and CSNK1A1, SPARC and RPS14) associated with CDR of the 5 q syndrome showed marked down regulation[40]. RBM22 is a highly conserved ribosomal protein, and the effects of downregulation may include deregulated apoptosis by its action on ALG-2 (apoptosis linked gene). CSNK1A1 has recently been shown to be important in Hedgehog signaling that governs cell growth and a deregulation is observed in cancers. Downregulation of CSNK1A1 may contribute to MDS by altering the Hh signaling. RPS14 is related to the 40S subunit of the ribosome that is downregulated in Cd34 cells from MDS patients with del 5q[40]. Recent

work shows that downregulation of RPS14 leads to defective erythropoiesis and increased apoptosis in erythroid progenitors [41].

Another candidate gene in the CDR region is Early growth response gene (EGR-1), that encodes a transcription factor involved in the regulation of cell proliferation and apoptosis[42]. The effect of lenalidomide treatment on expression of EGR-1 was studied in del 5q Burkitt's lymphoma and del 5q multiple myeloma cell line. It was observed that lenalidomide treatment did not influence the transcriptional activity of EGR-1 gene, but increased the nuclear export of EGR-1 in a dose dependent manner, especially in those with a single copy of EGR-1 gene. When the gene expression was blocked with an EGR1 siRNA, Burkitt's cells proliferated more than normal cells,

supporting the tumor suppressor role of EGR-1 in Burkitt's cells. Thus, lenalidomide increases the nuclear transport of the pro apoptotic and tumor suppressor EGR-1, which could explain its cytotoxic effects on del 5q31 myelodysplastic clones.

In an effort to identify molecular markers of response to lenalidomide, Ebert et al [43] collected bone marrow aspirates of non 5 q del MDS patients before and after treatment with lenalidomide and studied the difference in gene expression between responders and non responders. Differential expression of the genes that needed for erythroid differentiation was noted in non responders than responders. In patients who responded to lenalidomide, they found that the bone marrow aspirates before treatment showed decreased expression of the set of the genes

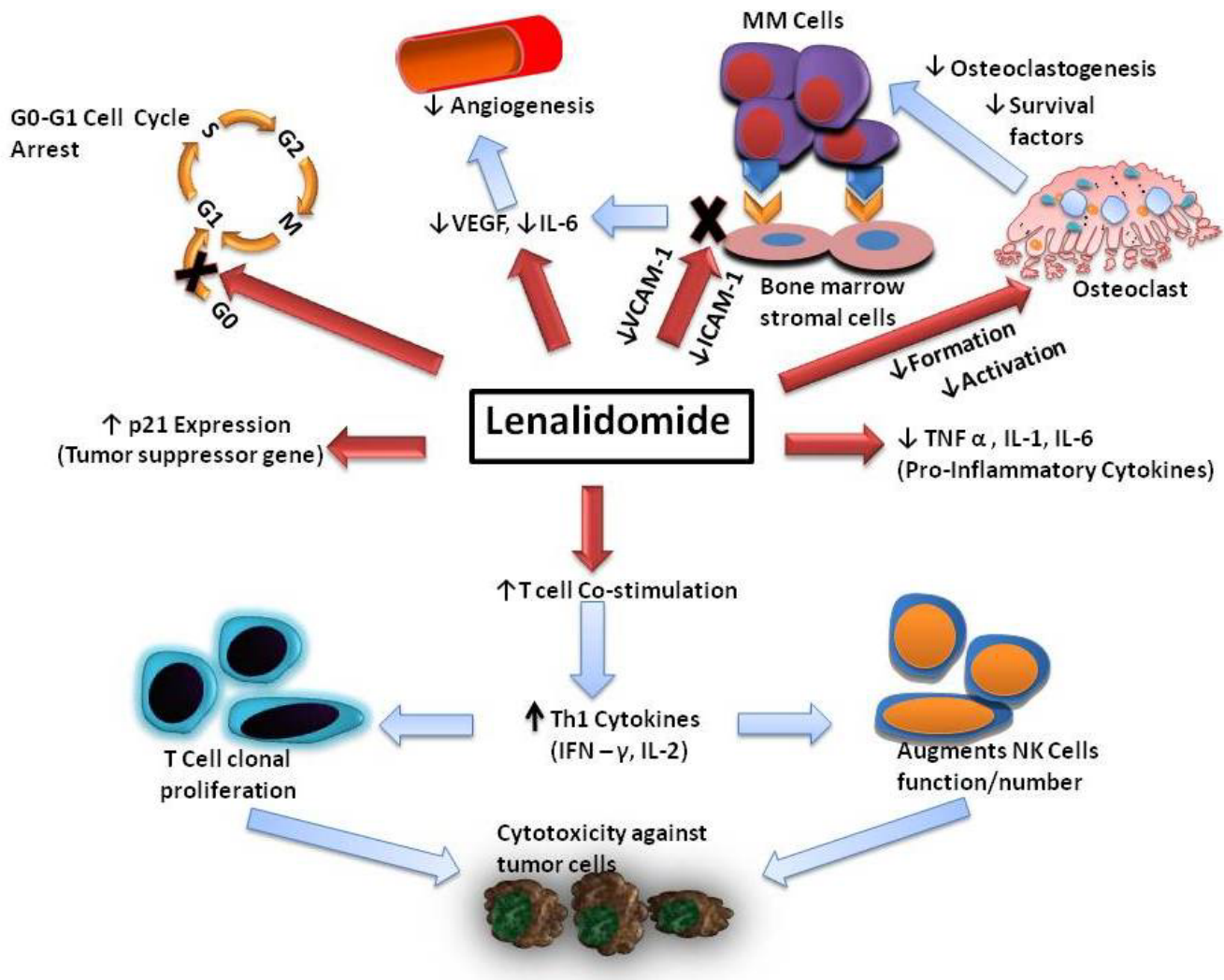


Figure 3
Mechanism of action of lenalidomide. Various mechanisms by which lenalidomide achieves clinical efficacy in hematological malignancies.

needed for erythroid differentiation. The thinking is that lenalidomide helps to overcome this differentiation block and hence the clinical response is seen in that subset of patients with decreased gene expression compared to the non responders. This was thought have potential predictability for benefit from lenalidomide therapy in non 5q del patients.

A recent study by Wei et al [44] demonstrates that the haplo-deficient enzymatic targets of lenalidomide within the CDR are dual specificity phosphatases, Cdc25C and PP2A α . These phosphatases are coregulators of G2-M checkpoint in the cell cycle and thus, their inhibition by lenalidomide leads to G2 arrest and apoptosis. Since, most MDS patients including those with deletion 5q become refractory to Erythropoietin, the authors examined the molecular mechanisms by which lenalidomide may modulate this effect. They observed that the CD45 phosphatase is overactivated in MDS and may inhibit Epo receptor stimulated phosphorylation of stat5. Furthermore, they observed that lenalidomide is a Protein Tyrosine Phosphatase inhibitor of CD45 leading to reversal of CD45 induced inhibition of EPO-R/STAT5 signaling essential for hematopoiesis. The authors hypothesized that lenalidomide may thus be able to restore sensitivity to MDS by this mechanism. These concepts have led to clinical trial effort using lenalidomide in combination with erythropoietin in low grade MDS [45].

Conclusion

Lenalidomide has shown clinical efficacy in myelodysplasia [46-50], multiple myeloma [51-56], chronic lymphocytic leukemia [9,57-59], primary systemic amyloidosis [60,61], Non-Hodgkin's Lymphoma [62], solid tumors [63-70], myelofibrosis with myeloid metaplasia [71] and Waldenstrom Macroglobulinemia [72]. It is also being increasingly used in combination with other chemotherapeutic agents. In relapsed multiple myeloma, it was combined with liposomal doxorubicin, vincristine and dexamethasone[53] as well as with adriamycin and dexamethasone[73]. Another combination being tested is lenalidomide with melphalan and dexamethasone in treatment naïve myeloma[56]. A regimen combining lenalidomide with docetaxel and carboplatin has been tested in a phase 1 trial in advanced solid tumors[70]. Another very interesting combination is lenalidomide and rituximab in diseases such as NHL[74], CLL[9] and Waldenstrom Macroglobulinemia[72]. Preliminary results from some of these trials appear encouraging and final results are awaited. Even though various mechanisms have been proposed to explain its efficacy, as a single agent or in combination, in these conditions, the exact molecular and cellular targets of lenalidomide are not very well defined. It is possible that its efficacy is a result of its effects on the immune system, angiogenesis and sig-

nal transduction or a combination of all of these. Figure 3 summarizes the mechanism of action of lenalidomide as we know so far. Future studies will assess these mechanisms as well as direct actions on the malignant cells. These studies may uncover newer targets and lead to efforts to enhance the efficacy of this interesting new agent. These studies may also lead to development of newer IMiDs that may target specific mechanisms of action more potently, to further enhance their clinical activity and may provide an important biologic rationale to combine therapies with distinct, yet well defined site of action.

Competing interests

The authors declare that they have no competing interests.

Authors' contributions

Venumadhav Kotla and Swati Goel equally contributed to the extensive literature review and manuscript drafting. Sangeeta Nischal and Christoph Heuck participated in the literature review. Kumar Vivek participated in the literature review and designed the figures. Bhaskar Das provided the chemical names and the structures of the different compounds. Amit Verma conceived of the review, and participated in its design and coordination. All authors read and approved the final manuscript.

Acknowledgements

Supported by NIH 1R01HL082946-01, NIH RO1AG02913801, Gabrielle Angel Foundation, Hershaft family Foundation, Leukemia and Lymphoma society and an American cancer society grant

References

- Knobloch J, Ruther U: **Shedding light on an old mystery: thalidomide suppresses survival pathways to induce limb defects.** *Cell Cycle* 2008, **7(9)**:1121-7.
- Shannon EJ, Miranda RO, Morales MJ, Hastings RC: **Inhibition of de novo IgM antibody synthesis by thalidomide as a relevant mechanism of action in leprosy.** *Scand J Immunol* 1981, **13(6)**:553-62.
- Moncada B, Baranda ML, Gonzalez-Amaro R, Urbina R, Loredó CE: **Thalidomide—effect on T cell subsets as a possible mechanism of action.** *Int J Lepr Other Mycobact Dis* 1985, **53(2)**:201-5.
- Moreira AL, Sampaio EP, Zmuidzinas A, Frindt P, Smith KA, Kaplan G: **Thalidomide exerts its inhibitory action on tumor necrosis factor alpha by enhancing mRNA degradation.** *J Exp Med* 1993, **177(6)**:1675-80.
- Swann JB, Smyth MJ: **Immune surveillance of tumors.** *J Clin Invest* 2007, **117(5)**:1137-46.
- Corral LG, Haslett PA, Muller GW, Chen R, Wong LM, Ocampo CJ, Patterson RT, Stirling DI, Kaplan G: **Differential cytokine modulation and T cell activation by two distinct classes of thalidomide analogues that are potent inhibitors of TNF-alpha.** *J Immunol* 1999, **163(1)**:380-6.
- Muller GW, Chen R, Huang SY, Corral LG, Wong LM, Patterson RT, Chen Y, Kaplan G, Stirling DI: **Amino-substituted thalidomide analogs: potent inhibitors of TNF-alpha production.** *Bioorg Med Chem Lett* 1999, **9(11)**:1625-30.
- Symeonidis A, Kourakli A, Katevas P, Perraki M, Tiniakou M, Matsouka P, Georgoulas V, Zoumbos N: **Immune function parameters at diagnosis in patients with myelodysplastic syndromes: correlation with the FAB classification and prognosis.** *Eur J Haematol* 1991, **47(4)**:277-81.

9. Chanan-Khan A, Miller KC, Musial L, Lawrence D, Padmanabhan S, Takeshita K, Porter CVW, Goodrich DW, Bernstein ZP, Wallace P, Spaner D, Mohr A, Byrne C, Hernandez-Ilizaliturri F, Chrystal C, Starostik P, Czuczman MS: **Clinical efficacy of lenalidomide in patients with relapsed or refractory chronic lymphocytic leukemia: results of a phase II study.** *J Clin Oncol* 2006, **24(34)**:5343-9.
10. Lichtenstein A, Tu Y, Fady C, Vescio R, Berenson J: **Interleukin-6 inhibits apoptosis of malignant plasma cells.** *Cell Immunol* 1995, **162(2)**:248-55.
11. Breitkreutz I, Raab MS, Vallet S, Hideshima T, Raje N, Mitsiades C, Chauhan D, Okawa Y, Munshi NC, Richardson PG, Anderson KC: **Lenalidomide inhibits osteoclastogenesis, survival factors and bone-remodeling markers in multiple myeloma.** *Leukemia* 2008, **22(10)**:1925-1932.
12. Geitz H, Handt S, Zwingenberger K: **Thalidomide selectively modulates the density of cell surface molecules involved in the adhesion cascade.** *Immunopharmacology* 1996, **31(2-3)**:213-21.
13. Richardson PG, Schlossman RL, Weller E, Hideshima T, Mitsiades C, Davies F, LeBlanc R, Catley LP, Doss D, Kelly K, McKenney M, Mechlowicz J, Freeman A, Deocampo R, Rich R, Ryoo JJ, Chauhan D, Balinski K, Zeldis J, Anderson KC: **Immunomodulatory drug CC-5013 overcomes drug resistance and is well tolerated in patients with relapsed multiple myeloma.** *Blood* 2002, **100(9)**:3063-7.
14. Melchert M, List A: **The thalidomide saga.** *Int J Biochem Cell Biol* 2007, **39**:7-8.
15. Sharpe AH, Abbas AK: **T-cell costimulation—biology, therapeutic potential, and challenges.** *N Engl J Med* 2006, **355(10)**:973-5.
16. LeBlanc R, Hideshima T, Catley LP, Shringarpure R, Burger R, Mitsiades N, Mitsiades C, Cheema P, Chauhan D, Richardson PG, Anderson KC, Munshi NC: **Immunomodulatory drug costimulates T cells via the B7-CD28 pathway.** *Blood* 2004, **103(5)**:1787-90.
17. Dredge K, Marriott JB, Todryk SM, Muller GW, Chen R, Stirling DI, Dalgleish AG: **Protective antitumor immunity induced by a costimulatory thalidomide analog in conjunction with whole tumor cell vaccination is mediated by increased Th1-type immunity.** *J Immunol* 2002, **168(10)**:4914-9.
18. Stirling D: **Thalidomide: a novel template for anticancer drugs.** *Semin Oncol* 2001, **28(6)**:602-6.
19. Epling-Burnette PK, Painter JS, Rollison DE, Ku E, Vendron D, Widen R, Boulware D, Zou JX, Bai F, List AF: **Prevalence and clinical association of clonal T-cell expansions in Myelodysplastic Syndrome.** *Leukemia* 2007, **21(4)**:659-67.
20. Davies FE, Raje N, Hideshima T, Lentzsch S, Young G, Tai YT, Lin B, Podar K, Gupta D, Chauhan D, Treon SP, Richardson PG, Schlossman RL, Morgan GJ, Muller GW, Stirling DI, Anderson KC: **Thalidomide and immunomodulatory derivatives augment natural killer cell cytotoxicity in multiple myeloma.** *Blood* 2001, **98(1)**:210-6.
21. Hayashi T, Hideshima T, Akiyama M, Podar K, Yasui H, Raje N, Kumar S, Chauhan D, Treon SP, Richardson P, Anderson KC: **Molecular mechanisms whereby immunomodulatory drugs activate natural killer cells: clinical application.** *Br J Haematol* 2005, **128(2)**:192-203.
22. Bartlett JB: **Lenalidomide enhances tumor killing invitro during ADCC mediated by Trastuzumab, Cetuximab, and Rituximab.** *Journal of Clinical Oncology* 2007, **25(18S)**:3023.
23. Wu L, Adams M, Carter T, Chen R, Muller G, Stirling D, Schafer P, Bartlett JB: **lenalidomide enhances natural killer cell and monocyte-mediated antibody-dependent cellular cytotoxicity of rituximab-treated CD20+ tumor cells.** *Clin Cancer Res* 2008, **14(14)**:4650-7.
24. Shadduck RK, Latsko JM, Rossetti JM, Haq B, Abdulhaq H: **Recent advances in myelodysplastic syndromes.** *Exp Hematol* 2007, **35(4 Suppl 1)**:137-43.
25. D'Amato RJ, Loughnan MS, Flynn E, Folkman J: **Thalidomide is an inhibitor of angiogenesis.** *Proc Natl Acad Sci USA* 1994, **91(9)**:4082-5.
26. Gupta D, Treon SP, Shima Y, Hideshima T, Podar K, Tai YT, Lin B, Lentzsch S, Davies FE, Chauhan D, Schlossman RL, Richardson P, Ralph P, Wu L, Payvandi F, Muller G, Stirling DI, Anderson KC: **Adherence of multiple myeloma cells to bone marrow stromal cells upregulates vascular endothelial growth factor secretion: therapeutic applications.** *Leukemia* 2001, **15(12)**:1950-61.
27. Teo SK: **Properties of thalidomide and its analogues: implications for anticancer therapy.** *Aaps J* 2005, **7(1)**:E14-9.
28. Dredge K, Marriott JB, Macdonald CD, Man HW, Chen R, Muller GW, Stirling D, Dalgleish AG: **Novel thalidomide analogues display anti-angiogenic activity independently of immunomodulatory effects.** *Br J Cancer* 2002, **87(10)**:1166-72.
29. Giagounidis AA, Germing U, Haase S, Hildebrandt B, Schlegelberger B, Schoch C, Wilkens L, Heinsch M, Willems H, Aivado M, Aul C: **Clinical, morphological, cytogenetic, and prognostic features of patients with myelodysplastic syndromes and del(5q) including band q31.** *Leukemia* 2004, **18(1)**:113-9.
30. Buesche G: **Anti-Angiogenic in vivo effect of lenalidomide in MDS with del 5 q chromosome abnormality.** *Oral Abstratc Session ASCO 2007* 2007.
31. Gandhi AK, Kang J, Naziruddin S, Parton A, Schafer PH, Stirling DI: **Lenalidomide inhibits proliferation of Namalwa CSN.70 cells and interferes with Gab1 phosphorylation and adaptor protein complex assembly.** *Leuk Res* 2006, **30(7)**:849-58.
32. Dredge K, Horsfall R, Robinson SP, Zhang LH, Lu L, Tang Y, Shirley MA, Muller G, Schafer P, Stirling D, Dalgleish AG, Bartlett JB: **Orally administered lenalidomide (CC-5013) is anti-angiogenic in vivo and inhibits endothelial cell migration and Akt phosphorylation in vitro.** *Microvasc Res* 2005, **69(1-2)**:56-63.
33. Bartlett JB, Dredge K, Dalgleish AG: **The evolution of thalidomide and its IMiD derivatives as anticancer agents.** *Nat Rev Cancer* 2004, **4(4)**:314-22.
34. Verhelle D, Corral LG, Wong K, Mueller JH, Moutouh-de Parseval L, Jensen-Pergakes K, Schafer PH, Chen R, Glezer E, Ferguson GD, Lopez-Girona A, Muller GW, Brady HA, Chan KW: **Lenalidomide and CC-4047 inhibit the proliferation of malignant B cells while expanding normal CD34+ progenitor cells.** *Cancer Res* 2007, **67(2)**:746-55.
35. Hideshima T, Chauhan D, Shima Y, Raje N, Davies FE, Tai YT, Treon SP, Lin B, Schlossman RL, Richardson P, Muller G, Stirling DI, Anderson KC: **Thalidomide and its analogs overcome drug resistance of human multiple myeloma cells to conventional therapy.** *Blood* 2000, **96(9)**:2943-50.
36. Mitsiades N, Mitsiades CS, Poulaki V, Chauhan D, Richardson PG, Hideshima T, Munshi NC, Treon SP, Anderson KC: **Apoptotic signaling induced by immunomodulatory thalidomide analogs in human multiple myeloma cells: therapeutic implications.** *Blood* 2002, **99(12)**:4525-30.
37. Chanan-Khan A: **Pro-Apoptotic effect of Lenalidomide in patients with Chronic Lymphocytic Leukemia is possibly mediated through interruption of Phosphatidylinositol pathway.** *Blood(ASH annual meeting abstracts)* 2006, **108**.
38. Mitsiades CS, Mitsiades NS, Richardson PG, Munshi NC, Anderson KC: **Multiple myeloma: a prototypic disease model for the characterization and therapeutic targeting of interactions between tumor cells and their local microenvironment.** *J Cell Biochem* 2007, **101(4)**:950-68.
39. Pellagatti A, Jadersten M, Forsblom AM, Cattani H, Christensson B, Emanuelsson EK, Merup M, Nilsson L, Samuelsson J, Sander B, Waincoat JS, Boulwood J, Hellstrom-Lindberg E: **Lenalidomide inhibits the malignant clone and up-regulates the SPARC gene mapping to the commonly deleted region in 5q- syndrome patients.** *Proc Natl Acad Sci USA* 2007, **104(27)**:11406-11.
40. Boulwood J, Pellagatti A, Cattani H, Lawrie CH, Giagounidis A, Malcovati L, Porta MG, Jadersten M, Killick S, Fidler C, Cazzola M, Hellstrom-Lindberg E, Waincoat JS: **Gene expression profiling of CD34(+) cells in patients with the 5q- syndrome.** *Br J Haematol* 2007, **139(4)**:578-89.
41. Ebert BL, Pretz J, Bosco J, Chang CY, Tamayo P, Galili N, Raza A, Root DE, Attar E, Ellis SR, Golub TR: **Identification of RPS14 as a 5q- syndrome gene by RNA interference screen.** *Nature* 2008, **451(7176)**:335-9.
42. Gandhi AK, Kang J, Verhelle D, Stirling DI, Schafer PH: **Inhibition of cell proliferation by lenalidomide is associated with stimulation of Egr1 transcriptional activity in a chromosome 5 deleted Burkitt's lymphoma and multiple myeloma cell line.** *J Clin Oncol (Meeting Abstracts)* 2007, **25(18_suppl)**.
43. Ebert BL, Galili N, Tamayo P, Bosco J, Mak R, Pretz J, Tanguturi S, Ladd-Acosta C, Stone R, Golub TR, Raza A: **An erythroid differentiation signature predicts response to lenalidomide in myelodysplastic syndrome.** *PLoS Med* 2008, **5(2)**:e35.

44. Wei S, Chen X, Rocha K, Epling-Burnette PK, Djeu JY, Liu Q, Byrd J, Sokol L, Lawrence N, Pireddu R, Dewald G, Williams A, Maciejewski J, List A: **A critical role for phosphatase haploinsufficiency in the selective suppression of deletion 5q MDS by lenalidomide.** *Proc Natl Acad Sci USA* 2009 in press.
45. List A: **Lenalidomide promotes erythropoiesis in Myelodysplastic syndromes by CD45 Protein tyrosine Phosphatase inhibition.** *Blood* 2006, **108**: abstract 1360
46. List A, Kurtin S, Roe DJ, Buresh A, Mahadevan D, Fuchs D, Rimsza L, Heaton R, Knight R, Zeldis JB: **Efficacy of lenalidomide in myelodysplastic syndromes.** *N Engl J Med* 2005, **352(6)**:549-57.
47. List AF: **Lenalidomide: from bench to bedside (part I).** *Cancer Control* 2006, **13(Suppl)**:2-3.
48. List AF, Baker AF, Green S, Bellamy W: **Lenalidomide: targeted anemia therapy for myelodysplastic syndromes.** *Cancer Control* 2006, **13(Suppl)**:4-11.
49. Raza A, Reeves JA, Feldman EJ, Dewald GW, Bennett JM, Deeg HJ, Dreisbach L, Schiffer CA, Stone RM, Greenberg PL, Curtin PT, Klimek VM, Shammo JM, Thomas D, Knight RD, Schmidt M, Wride K, Zeldis JB, List AF: **Phase 2 study of lenalidomide in transfusion-dependent, low-risk, and intermediate-1 risk myelodysplastic syndromes with karyotypes other than deletion 5q.** *Blood* 2008, **111(1)**:86-93.
50. List A, Dewald G, Bennett J, Giagounidis A, Raza A, Feldman E, Powell B, Greenberg P, Thomas D, Stone R, Reeder C, Wride K, Patin J, Schmidt M, Zeldis J, Knight R: **Lenalidomide in the myelodysplastic syndrome with chromosome 5q deletion.** *N Engl J Med* 2006, **355(14)**:1456-65.
51. Tariman JD: **Lenalidomide: a new agent for patients with relapsed or refractory multiple myeloma.** *Clin J Oncol Nurs* 2007, **11(4)**:569-74.
52. Weber DM, Chen C, Niesvizky R, Wang M, Belch A, Stadtmauer EA, Siegel D, Borrello I, Rajkumar SV, Chanan-Khan AA, Lonial S, Yu Z, Patin J, Olesnyckyj M, Zeldis JB, Knight RD: **Lenalidomide plus dexamethasone for relapsed multiple myeloma in North America.** *N Engl J Med* 2007, **357(21)**:2133-42.
53. Baz R, Walker E, Karam MA, Choueiri TK, Jawde RA, Bruening K, Reed J, Faiman B, Ellis Y, Brand C, Srkalovic G, Andresen S, Knight R, Zeldis J, Hussein MA: **Lenalidomide and pegylated liposomal doxorubicin-based chemotherapy for relapsed or refractory multiple myeloma: safety and efficacy.** *Ann Oncol* 2006, **17(12)**:1766-71.
54. Niesvizky R, Jayabalan DS, Christos PJ, Furst JR, Naib T, Ely S, Jalbrzikowski J, Pearse RN, Zafar F, Pekle K, Larow A, Lent R, Mark T, Cho HJ, Shore T, Tepler J, Harpel J, Schuster MW, Mathew S, Leonard JP, Mazumdar M, Chen-Kiang S, Coleman M: **BiRD (Biaxin [clarithromycin]/Revlimid [lenalidomide]/dexamethasone) combination therapy results in high complete- and overall-response rates in treatment-naive symptomatic multiple myeloma.** *Blood* 2008, **111(3)**:1101-9.
55. Rajkumar SV, Hayman SR, Lacy MQ, Dispenzieri A, Geyer SM, Kabat B, Zeldenrust SR, Kumar S, Greipp PR, Fonseca R, Lust JA, Russell SJ, Kyle RA, Witzig TE, Gertz MA: **Combination therapy with lenalidomide plus dexamethasone (Rev/Dex) for newly diagnosed myeloma.** *Blood* 2005, **106(13)**:4050-3.
56. Palumbo A, Falco P, Corradini P, Falcone A, Di Raimondo F, Giuliani N, Crippa C, Ciccone G, Omede P, Ambrosini MT, Gay F, Bringhen S, Musto P, Foa R, Knight R, Zeldis JB, Boccadoro M, Petrucci MT: **Melphalan, prednisone, and lenalidomide treatment for newly diagnosed myeloma: a report from the GIMEMA-Italian Multiple Myeloma Network.** *J Clin Oncol* 2007, **25(28)**:4459-65.
57. Chanan-Khan A, Porter CW: **Immunomodulating drugs for chronic lymphocytic leukaemia.** *Lancet Oncol* 2006, **7(6)**:480-8.
58. Ramsay AG, Johnson AJ, Lee AM, Gorgun G, Le Dieu R, Blum W, Byrd JC, Gribben JG: **Chronic lymphocytic leukemia T cells show impaired immunological synapse formation that can be reversed with an immunomodulating drug.** *J Clin Invest* 2008, **118(7)**:2427-37.
59. Ferrajoli A, Lee BN, Schlette EJ, O'Brien SM, Gao H, Wen S, Wierda WG, Estrov Z, Faderl S, Cohen EN, Li C, Reuben JM, Keating MJ: **Lenalidomide induces complete and partial remissions in patients with relapsed and refractory chronic lymphocytic leukemia.** *Blood* 2008, **111(11)**:5291-7.
60. Dispenzieri A, Lacy MQ, Zeldenrust SR, Hayman SR, Kumar SK, Geyer SM, Lust JA, Allred JB, Witzig TE, Rajkumar SV, Greipp PR, Russell SJ, Kabat B, Gertz MA: **The activity of lenalidomide with or without dexamethasone in patients with primary systemic amyloidosis.** *Blood* 2007, **109(2)**:465-70.
61. Gertz MA, Comenzo R, Falk RH, Fermand JP, Hazenberg BP, Hawkins PN, Merlini G, Moreau P, Ronco P, Sanchoawala V, Sezer O, Solomon A, Grateau G: **Definition of organ involvement and treatment response in immunoglobulin light chain amyloidosis (AL): a consensus opinion from the 10th International Symposium on Amyloid and Amyloidosis, Tours, France, 18-22 April 2004.** *Am J Hematol* 2005, **79(4)**:319-28.
62. Wiernik PH, Lossos IS, Tuscano JM, Justice G, Vose JM, Cole CE, Lam W, McBride K, Wride K, Pietronigro D, Takeshita K, Ervin-Haynes A, Zeldis JB, Habermann TM: **Lenalidomide Monotherapy in Relapsed or Refractory Aggressive Non-Hodgkin's Lymphoma.** *J Clin Oncol* 2008, **26(30)**:4952-7.
63. Sonpavde G, Hutson TE: **Recent advances in the therapy of renal cancer.** *Expert Opin Biol Ther* 2007, **7(2)**:233-42.
64. Sharma RA, Steward WP, Daines CA, Knight RD, O'Byrne KJ, Dalglish AG: **Toxicity profile of the immunomodulatory thalidomide analogue, lenalidomide: phase I clinical trial of three dosing schedules in patients with solid malignancies.** *Eur J Cancer* 2006, **42(14)**:2318-25.
65. Amato RJ, Hernandez-McClain J, Saxena S, Khan M: **Lenalidomide therapy for metastatic renal cell carcinoma.** *Am J Clin Oncol* 2008, **31(3)**:244-9.
66. Choueiri TK, Dreicer R, Rini BI, Elson P, Garcia JA, Thakkar SG, Baz RC, Mekhail TM, Jinks HA, Bukowski R: **Phase II study of lenalidomide in patients with metastatic renal cell carcinoma.** *Cancer* 2006, **107(11)**:2609-16.
67. Miller AA, Case D, Harmon M, Savage P, Lesser G, Hurd D, Melin SA: **Phase I study of lenalidomide in solid tumors.** *J Thorac Oncol* 2007, **2(5)**:445-9.
68. Zhang MM, Chan JK, Husain A, Guo HY, Teng NN: **Safety and efficacy of lenalidomide (Revlimid) in recurrent ovarian and primary peritoneal carcinoma.** *Gynecol Oncol* 2007, **105(1)**:194-8.
69. Fine HA, Kim L, Albert PS, Duic JP, Ma H, Zhang W, Tohny T, Figg WD, Royce C: **A phase I trial of lenalidomide in patients with recurrent primary central nervous system tumors.** *Clin Cancer Res* 2007, **13(23)**:7101-6.
70. Kalmadi S, Davis M, Dowlati A, O'Keefe S, Cline-Burkhardt M, Pelley RJ, Borden E, Dreicer R, Bukowski R, Mekhail T: **Phase I trial of three-weekly docetaxel, carboplatin and oral lenalidomide (Revlimid) in patients with advanced solid tumors.** *Invest New Drugs* 2007, **25(3)**:211-6.
71. Tefferi A, Cortes J, Verstovsek S, Mesa RA, Thomas D, Lasho TL, Hogan WJ, Litzow MR, Allred JB, Jones D, Byrne C, Zeldis JB, Ketterling RP, McClure RF, Giles F, Kantarjian HM: **Lenalidomide therapy in myelofibrosis with myeloid metaplasia.** *Blood* 2006, **108(4)**:1158-64.
72. Treon SP, Patterson CJ, Hunter ZR, Branagan AR: **Phase II Study of CC-5013 (Revlimid) and Rituximab in Waldenstrom's Macroglobulinemia: Preliminary Safety and Efficacy Results.** *ASH Annual Meeting Abstracts* 2005, **106(11)**: p. publication no.2443
73. Knop S, Gerecke C, Liebisch P, Topp MS, Platzbecker U, Sezer O, Vollmuth C, Falk K, Glasmacher A, Maeder U, Einsele H, Bargou RC: **Lenalidomide, adriamycin, and dexamethasone (RAD) in patients with relapsed and refractory multiple myeloma: a report from the German Myeloma Study Group DSMM (Deutsche Studiengruppe Multiples Myelom).** *Blood* 2009, **113(18)**:4137-43.
74. Zhang L, Qian Z, Cai Z, Sun L, Wang H, Bartlett JB, Yi Q, Wang M: **Synergistic antitumor effects of lenalidomide and rituximab on mantle cell lymphoma in vitro and in vivo.** *Am J Hematol* 2009 in press.